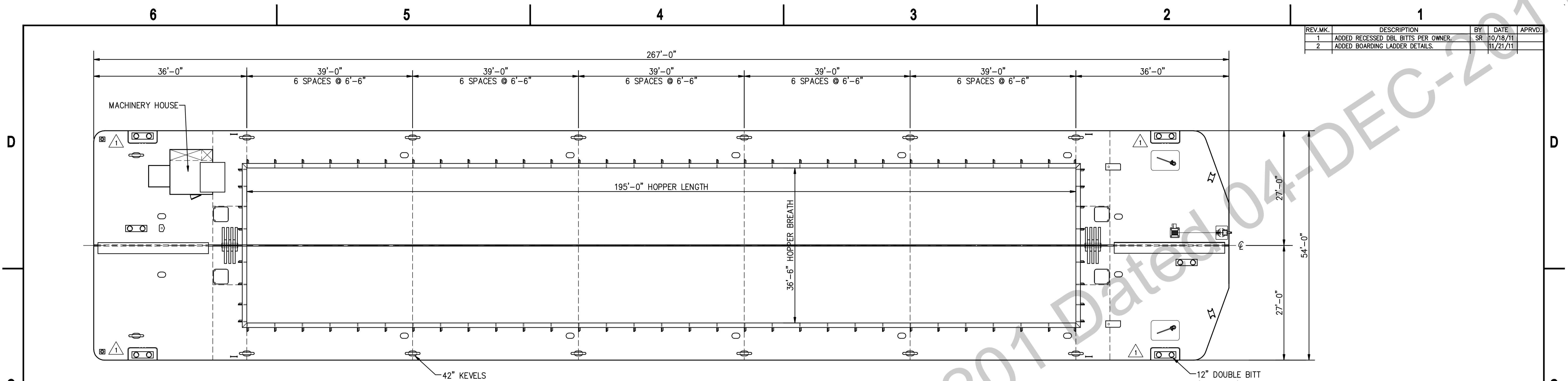
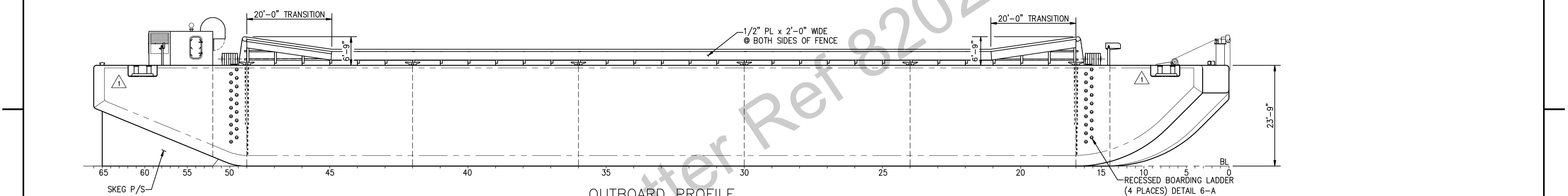


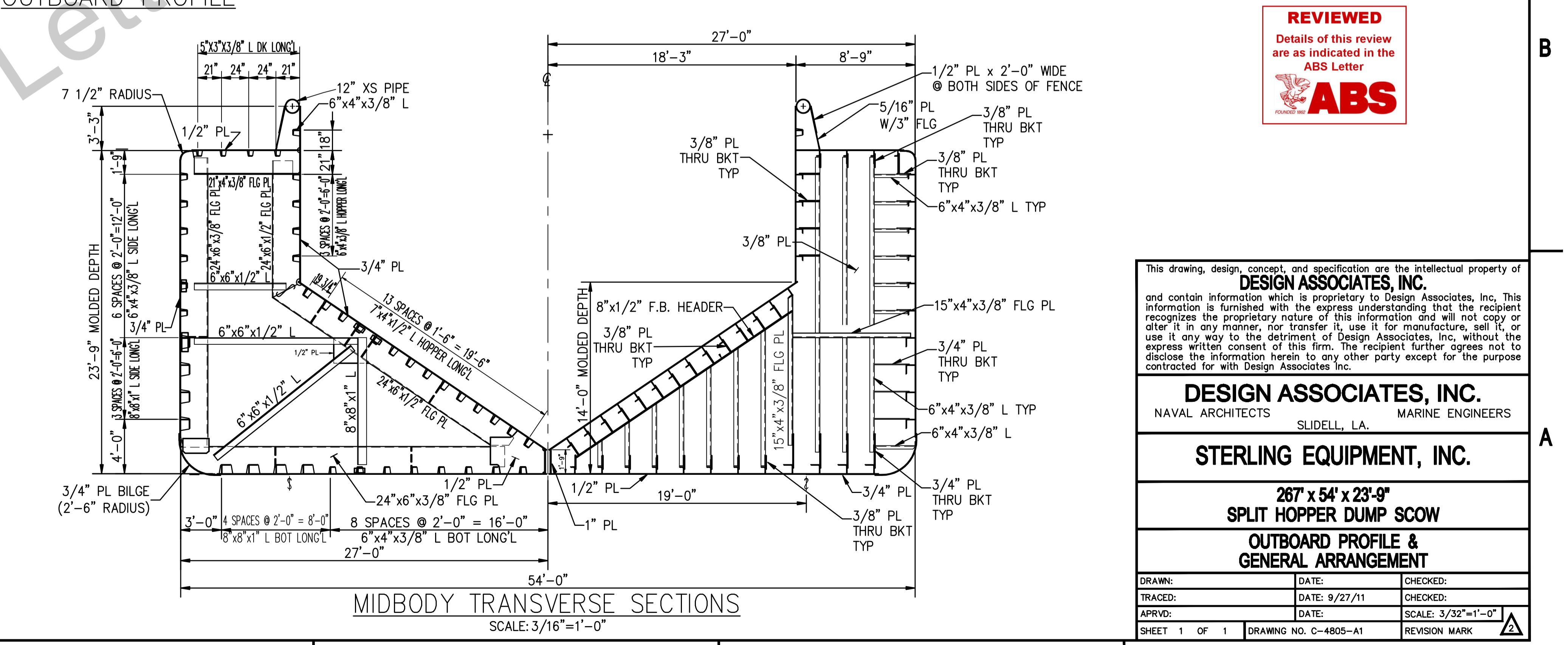
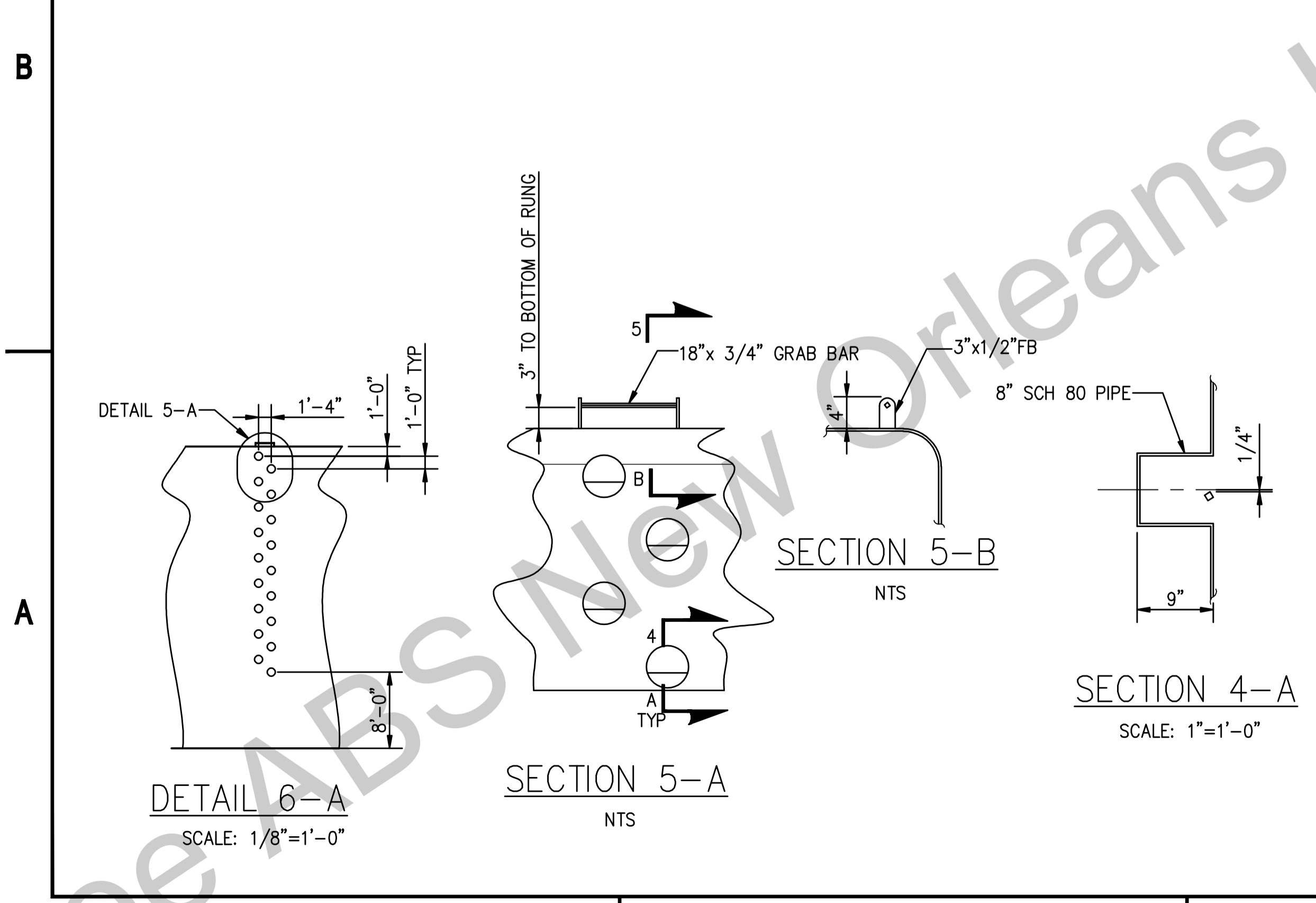
REV. MK.	DESCRIPTION	BY	DATE	APRVD.
1	ADDED RECESSED DBL BITTS PER OWNER.	SR	10/18/11	
2	ADDED BOARDING LADDER DETAILS.		11/21/11	



DECK PLAN



OUTBOARD PROFILE



MIDBODY TRANSVERSE SECTIONS



This drawing, design, concept, and specification are the intellectual property of **DESIGN ASSOCIATES, INC.** and contain information which is proprietary to Design Associates, Inc. This information is furnished with the express understanding that the recipient recognizes the proprietary nature of this information and will not copy or alter it in any manner, nor transfer it, use it for manufacture, sell it, or use it in any way to the detriment of Design Associates, Inc. without the express written consent of this firm. The recipient further agrees not to disclose the information herein to any other party except for the purpose contracted for with Design Associates Inc.

DESIGN ASSOCIATES, INC.
NAVAL ARCHITECTS MARINE ENGINEERS
SLIDELL, LA.

STERLING EQUIPMENT, INC.

267' x 54' x 23'-9"
SPLIT HOPPER DUMP SCOW
OUTBOARD PROFILE & GENERAL ARRANGEMENT

DRAWN:	DATE:	CHECKED:
TRACED:	DATE: 9/27/11	CHECKED:
APRVD:	DATE:	SCALE: 3/32"=1'-0"
SHEET 1 OF 1	DRAWING NO. C-4805-A1	REVISION MARK