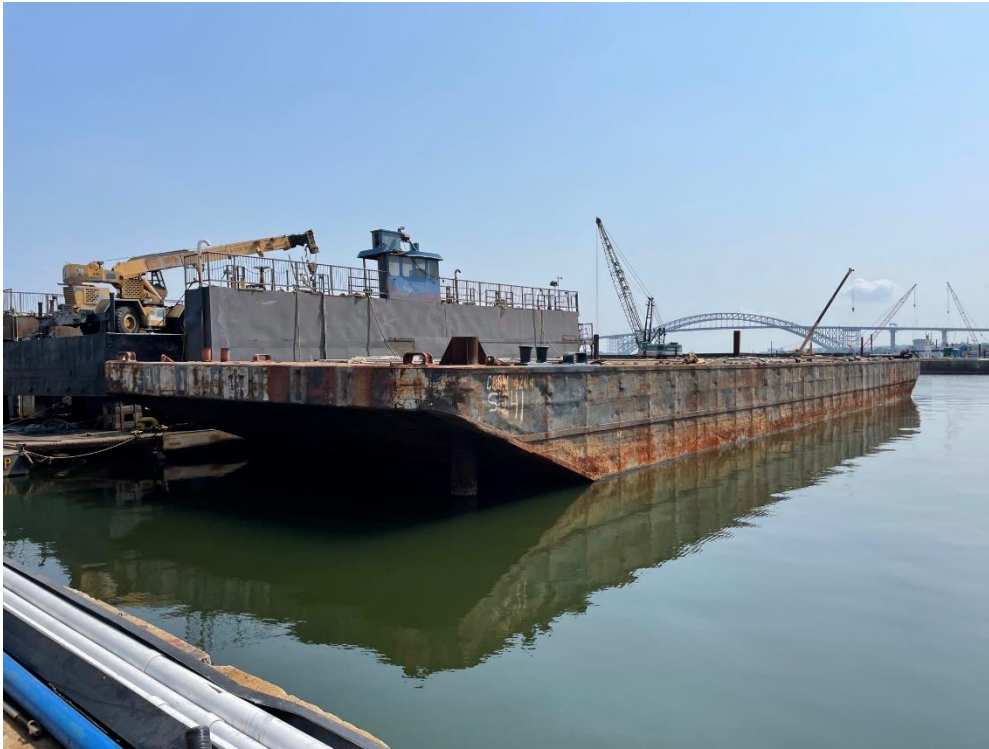


# SEI-41



<b>TYPE:</b>	<b>Deck Barge</b>
<b>CLASS:</b>	<b>ABS Oceans</b>
<b>STERLING #:</b>	<b>09-113</b>
<b>LENGTH</b>	<b>204'</b>
<b>BEAM</b>	<b>43.5'</b>
<b>DEPTH</b>	<b>12.75'</b>
<b>GROSS TONAGE:</b>	<b>931 Approx.</b>
<b>LIGHT DRAFT:</b>	
<b>COMPARTMENTS:</b>	<b>24</b>
<b>BULK HEADS:</b>	<b>(2) Longitudinal</b>
<b>SPUD WELLS:</b>	<b>1</b>
<b>SPUDS:</b>	<b>None</b>
<b>CAPACITY:</b>	<b>2200 Tons</b>
<b>OTHER:</b>	<b>All welded steel ABS classed deck barge with parallel straight sides and logs, flat deck and bottom. Similar rakes at each end with towing skegs.</b>



[www.sterlingequipment.com](http://www.sterlingequipment.com)