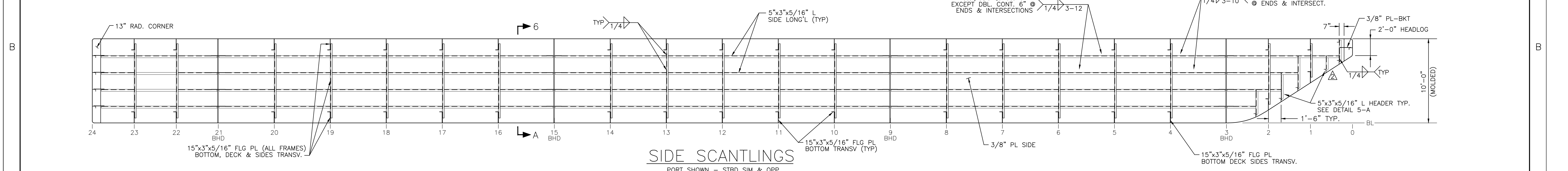
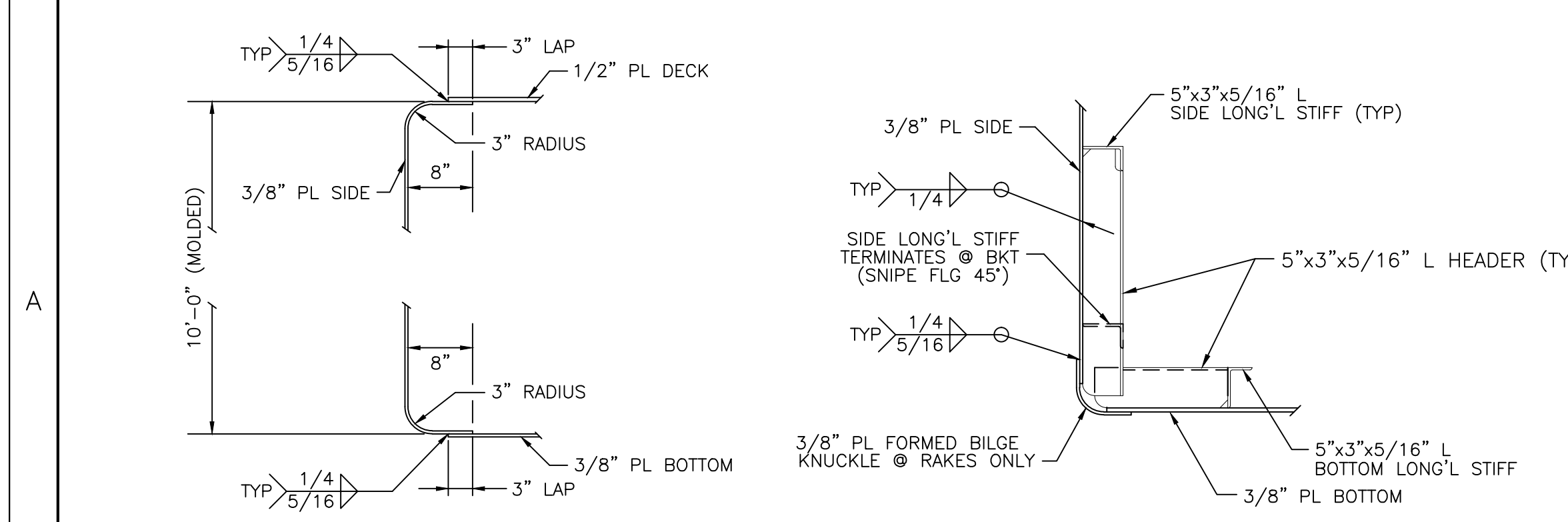


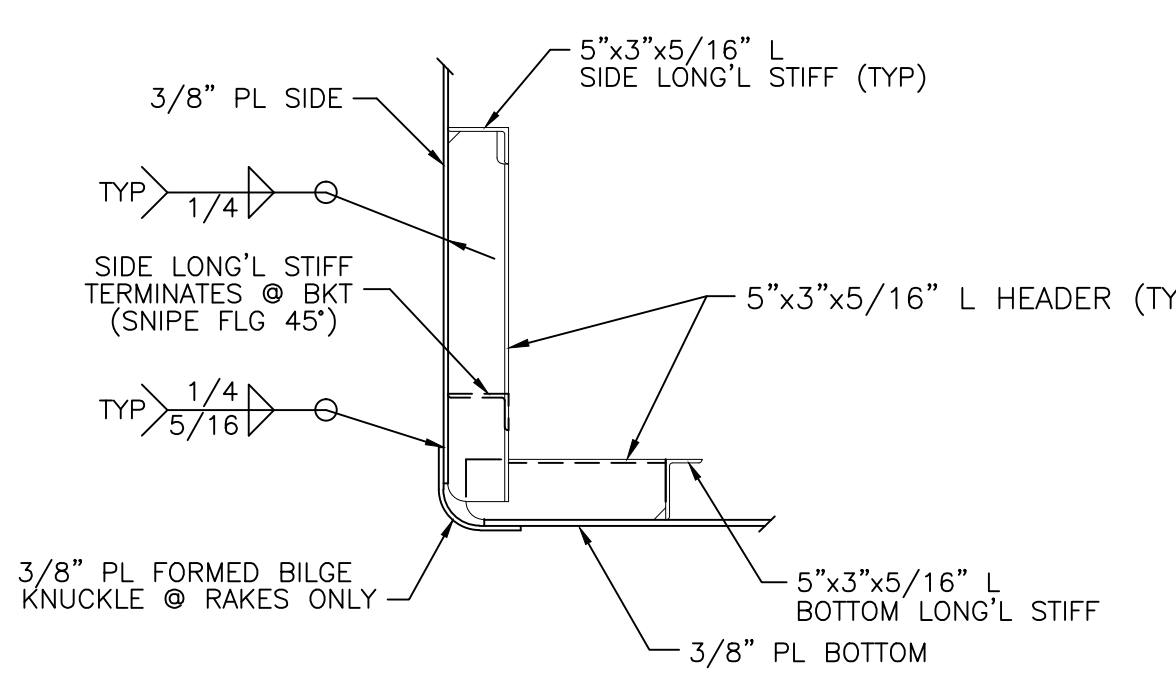
**DECK & BOTTOM SCANTLINGS**



**SIDE SCANTLINGS**  
PORT SHOWN - STBD SIM & OPP



**DETAIL 6-A**  
SIDE BILGE/GUNWALE DETAILS  
SCALE: 3/4"=1'-0"



**DETAIL 5-A**  
SIDE LONG STIFF/BILGE KNUCKLE HEADER  
SCALE: 3/4"=1'-0"

**TO CLASS:**

ABS #A1 BARGE

**NOTES:**

- 1) ALL MATERIALS TO BE OF ABS QUALITY TO SURVEYOR'S SATISFACTION.
- 2) ALL WORK TO BE PERFORMED IN ACCORDANCE WITH ABS REQUIREMENTS.
- 3) MAIN DECK DESIGNED FOR MAXIMUM UNIFORM DRY LOAD OF 2,000 POUNDS PER SQUARE FOOT.
- 4) BARGE IS TO BE UNMANNED.
- 5) ALL COMPARTMENTS ARE VOIDS.
- 6) FIT-UP AND WELDING TO BE TO THE SATISFACTION OF THE ATTENDING SURVEYOR.

2	ADDED HEADER TO FWD RAKE PER ABS COMMENTS DTD. 16-JUN-00	H.M.	7-5-00
REV	COMMENT	BY	DATE
<p>CONRAD SHIPYARD, INC. HOLDS PROPRIETARY RIGHTS TO THIS DOCUMENT AND ALL INFORMATION CONTAINED THEREIN. NEITHER RECEIPT NOR POSSESSION THEREOF CONFERS OR TRANSFERS ANY RIGHTS TO REPRODUCE, DISCLOSE, OR USE IN ANY MANNER THIS DOCUMENT, IN WHOLE OR IN PART, OR ANY INFORMATION CONTAINED THEREIN, EXCEPT BY WRITTEN PERMISSION OF CONRAD SHIPYARD, INC.</p> <p><b>CONRAD Shipyards, Inc.</b> 1501 FRONT STREET POST OFFICE BOX 790 MORGAN CITY, LOUISIANA 70381</p> <p>150'x50'x10'-0" SPUD BARGE</p> <p><b>SCANTLINGS PLAN</b></p>			
ABS APPROVAL	HULL NO. H328 & H329	DRAWN BY BH2	DATE 6-14-2000
USCG APPROVAL	JOB NO. H328 & H329	APPROVED BY	SCALE 3/16"=1'-0"
USCG SERIAL NO.	DRAWING NO. S-1	SHEET 1 OF 1	REVISION NO.