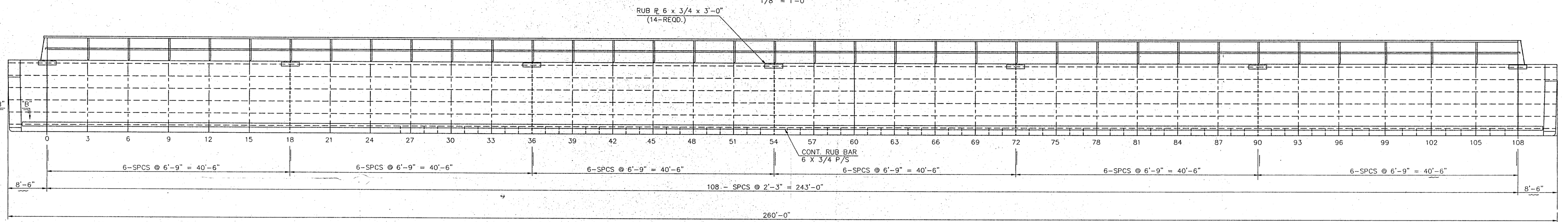
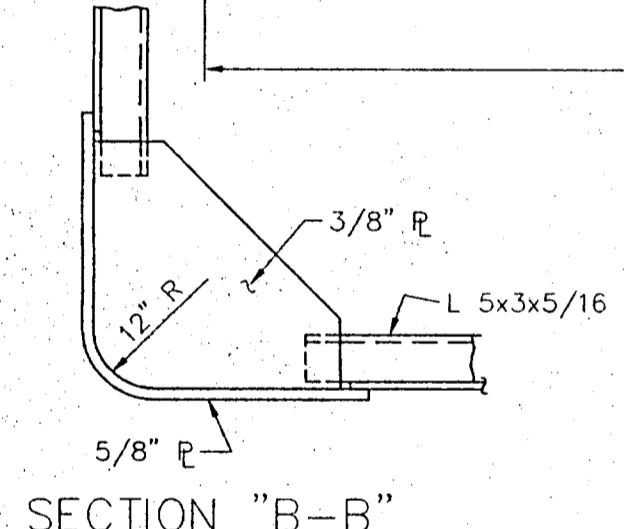


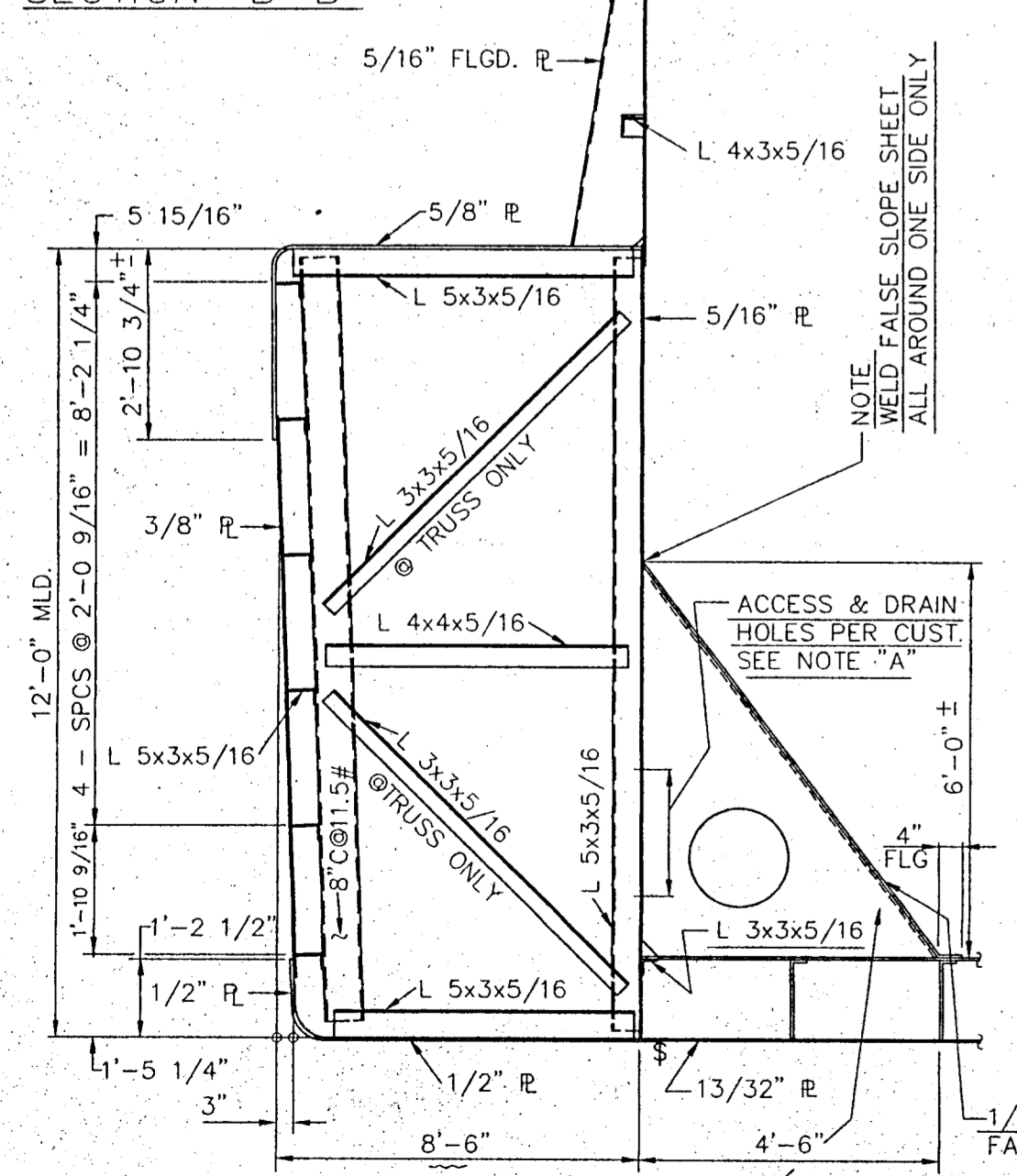
PLAN
1/8" = 1'-0"



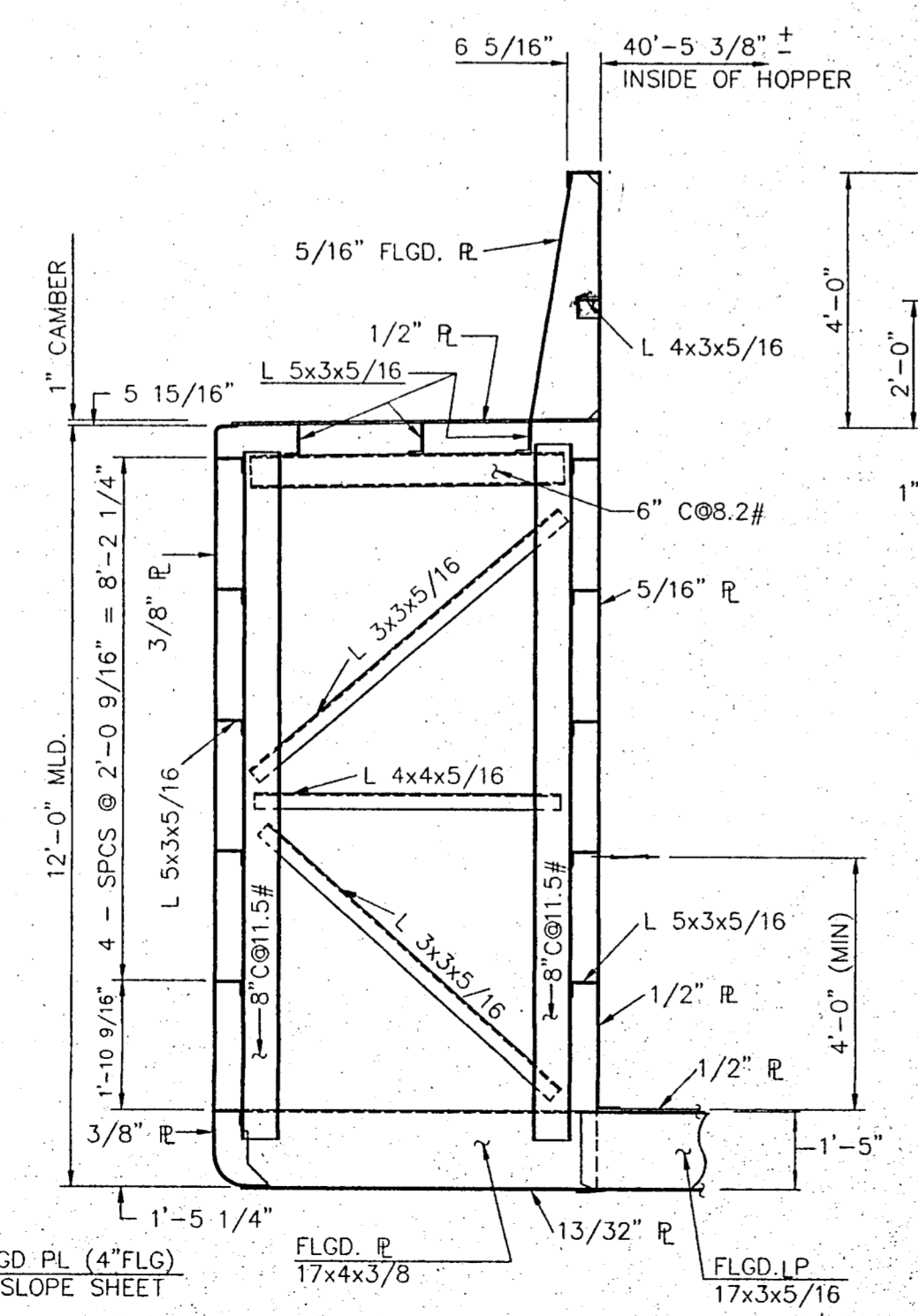
ELEVATION
1/8" = 1'-0"



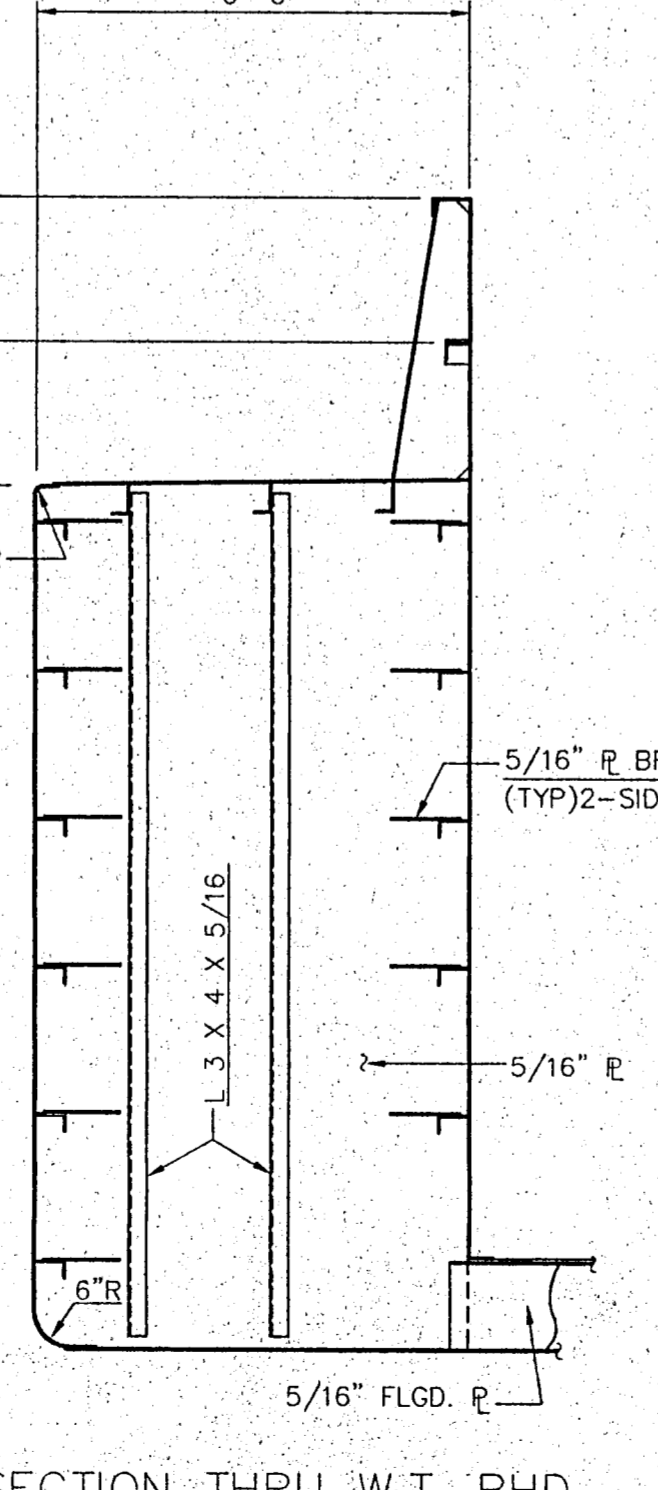
SECTION "B-B"



SECTION @ STERN FRAME & TRUSS
3/8" = 1'-0"



SECTION THRU SIDE TRUSS
STBD. SIDE LOOKING AFT
3/8" = 1'-0"



SECTION THRU W.T. BHD.
PORT SIDE LOOKING FORWARD
3/8" = 1'-0"

TOTAL VOLUME OF HOPPER TO TOP OF COAMING:
REV 1 CHGD 11" DBL BITT #2S129 TO 10" DBL BITT SF#2-1956 WITH OUT HORN, DELETED 1/2" DBL PL @ KEVLS, CHGD MANHOLES 18" DIA. TO 15" X 23" RWT, ADDED 4-BUTTON CHOCKS (PER CUSTOMER) 6-7-93
REV 2 ADDED (4) ADDITIONAL BUTTON CHOCKS PER CUSTOMER (12-2-93)

FINAL

ISSUE DATE - 9-9-93
REV. DATE - 12-2-93

CONTRACT NO. JOB NO.	
A TRINITY INDUSTRIES CO.	
DRAWN BY EV	DATE 2-22-93
CHECKED BY M.L.	DATE 9-6-93
APPROV A B S	DATE
APPROV U S C G	DATE
APPROV	DATE
JOB NO. X115-X122	HULL NO.

This drawing design concept and specifications are the property of TRINITY INDUSTRIES, INC. and are furnished on a confidential basis with an expressed understanding that they will not be copied in any manner, used for manufacture, sold, transferred, nor used to the detriment of said firm without written permission. The recipient further agrees not to disclose these contents hereof to any other parties except for those specific purposes for which this drawing was issued.

MID-SOUTH
BULK CARGO HOPPER BARGE
260' x 52'-6" x 12'-0" BOX
GENERAL ARRANGEMENT
MST-908-915

SIZE D	DWG NO. 5299_G	REV. 2
SCALE:	SHEET 1 OF	

10 9 8 7 6 5 4 3 2 1